

Complete AV Solutions

Commercial and Residential Applications

10 Year Warranty, Educational Programs, Design Services and
Dedicated 7 Days a Week Support



Earn CTS Renewal Units
www.atlonacademy.com

Enterprise AV Distribution

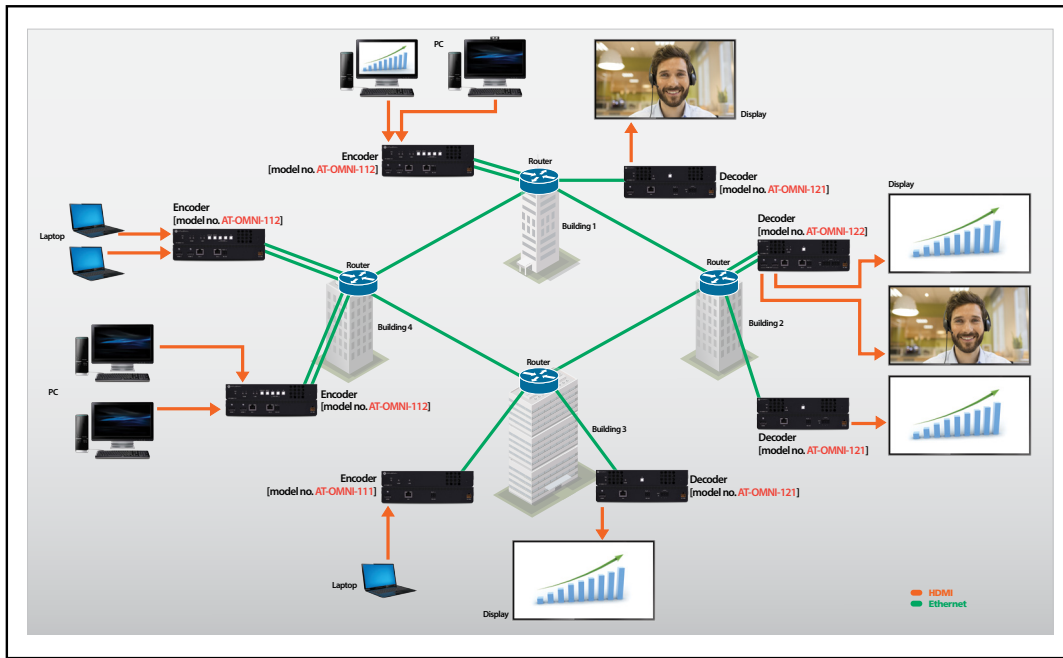
Challenge

A company is looking to invest in new AV technology as part of a corporate-wide initiative to promote collaboration and communication. For AV and IT requirements, there needs to be the capability to create a wide variety of configurations for audiovisual presentations among colleagues situated in various locations throughout the corporate campus. The AV implementation needs to be flexible and agile to accommodate just about any scenario, from an in-room presentation, to interdepartmental meetings between colleagues in several buildings, and even a company-wide presentation by the CEO.

Solution

Altona OmniStream offers an ideal integration solution that addresses the requirement for absolute AV system flexibility by distributing signals over Gigabit Ethernet. OmniStream encoders and decoders throughout rooms, floors, departments, and buildings can be connected into the campus-wide network infrastructure. This enables a "virtual matrix" – a highly versatile AV distribution system that allows any combination of input and output endpoints, anywhere on campus to be interconnected wherever presentation sources, flat-panel displays, and projectors are needed.

Application Diagram and Specifications



Works with
AMS

Model	Description	Inputs	Outputs	Benefits
AT-OMNI-111 New	OmniStream Single-Channel Networked AV Encoder	1 - HDMI 1 - RS-232	1 - LAN 1 - RS-232	Networked AV encoder for one HDMI source up to 4K/UHD, plus embedded audio and RS-232. SMPTE VC-2 visually lossless video compression with sub-one frame latency.
AT-OMNI-112 New	OmniStream Two-Channel Networked AV Encoder	2 - HDMI 2 - RS-232	2 - LAN 2 - RS-232	Networked AV encoder for two HDMI sources up to 4K/UHD, plus embedded audio and RS-232. SMPTE VC-2 visually lossless video compression with sub-one frame latency.
AT-OMNI-121 New	OmniStream Single-Channel Networked AV Decoder	1 - LAN 2 - Analog Audio 1 - RS-232	1 - HDMI 2 - Analog Audio 1 - RS-232	Networked AV decoder for one AV stream up to 4K/UHD, plus embedded audio and RS-232. Features HDMI output, 4K/UHD 4:4:4 scaling, downmixing, audio embedding and de-embedding, and more.
AT-OMNI-122 New	OmniStream Two-Channel Networked AV Decoder	2 - LAN 4 - Analog Audio 2 - RS-232	2 - HDMI 4 - Analog Audio 2 - RS-232	Networked AV decoder for two AV streams up to 4K/UHD, plus embedded audio and RS-232. Features two HDMI outputs, 4K/UHD 4:4:4 scaling for each output, downmixing, audio embedding and de-embedding, and more.

Seamless Audio Integration

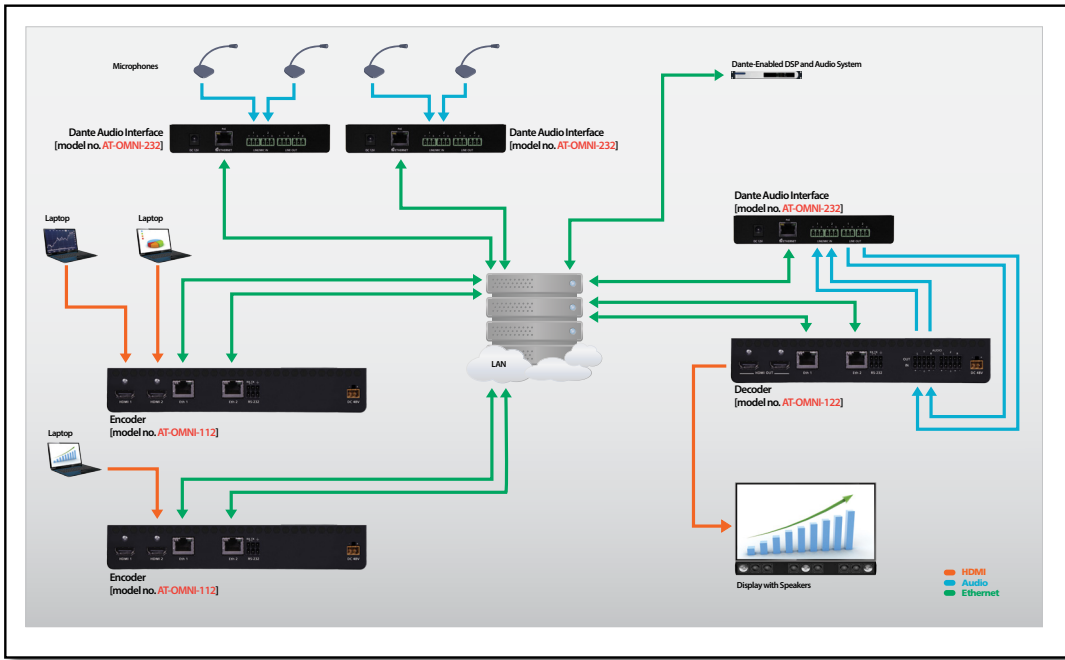
Challenge

A new corporate building is being planned, and AV systems need to be designed for all of the meeting spaces. The company's IT and AV decision makers want the AV interconnected throughout the building to allow presentation sessions over multiple meeting rooms, and share centralized AV resources such as videoconferencing codecs. They have also requested audio capabilities in many of the meeting rooms that would include microphones and digital signal processing (DSP). However, they would like to avoid having to design and integrate a separate audio system.

Solution

The Altona OmniStream networked AV platform allows highly versatile interconnection and switching between a large number of sources and displays. With the AT-OMNI-232 Dante™ Networked Audio Interface, microphones and other audio sources can be integrated alongside AV over the same network. The mics can then be processed by a Dante-enabled DSP in the same room, or incorporated into a facility-wide Dante audio system. The AT-OMNI-232 also works with an OmniStream AV decoder for processing de-embedded audio, and embedding Dante audio for playback through a display.

Application Diagram and Specifications



Works with
AMS

Model	Description	Inputs	Outputs	Benefits
New AT-OMNI-232	OmniStream Two-Channel Dante Networked Audio Interface	2 - Analog audio (mic/line) 1 - LAN	2 - Analog audio 1 - LAN	Sends and receives two channels of audio over a network. Works alongside OmniStream AV encoders and decoders for integrating mics and other sources, as well as de-embedded audio with a Dante-equipped DSP or audio system. Also can deliver Dante audio to an OmniStream AV decoder for embedding and playback through a display.
New AT-OMNI-112	OmniStream Two-Channel Networked AV Encoder	2 - HDMI 2 - RS-232	2 - LAN 2 - RS-232	Networked AV encoder for two HDMI sources up to 4K/UHD, plus embedded audio and RS-232. SMPTE VC-2 visually lossless video compression with sub-one frame latency.
New AT-OMNI-122	OmniStream Two-Channel Networked AV Decoder	2 - LAN 4 - Analog Audio 2 - RS-232	2 - HDMI 4 - Analog Audio 2 - RS-232	Networked AV decoder for two AV streams up to 4K/UHD, plus embedded audio and RS-232. Features two HDMI outputs, 4K/UHD 4:4:4 scaling for each output, downmixing, audio embedding and de-embedding, and more.

Huddle Room Solution

Challenge

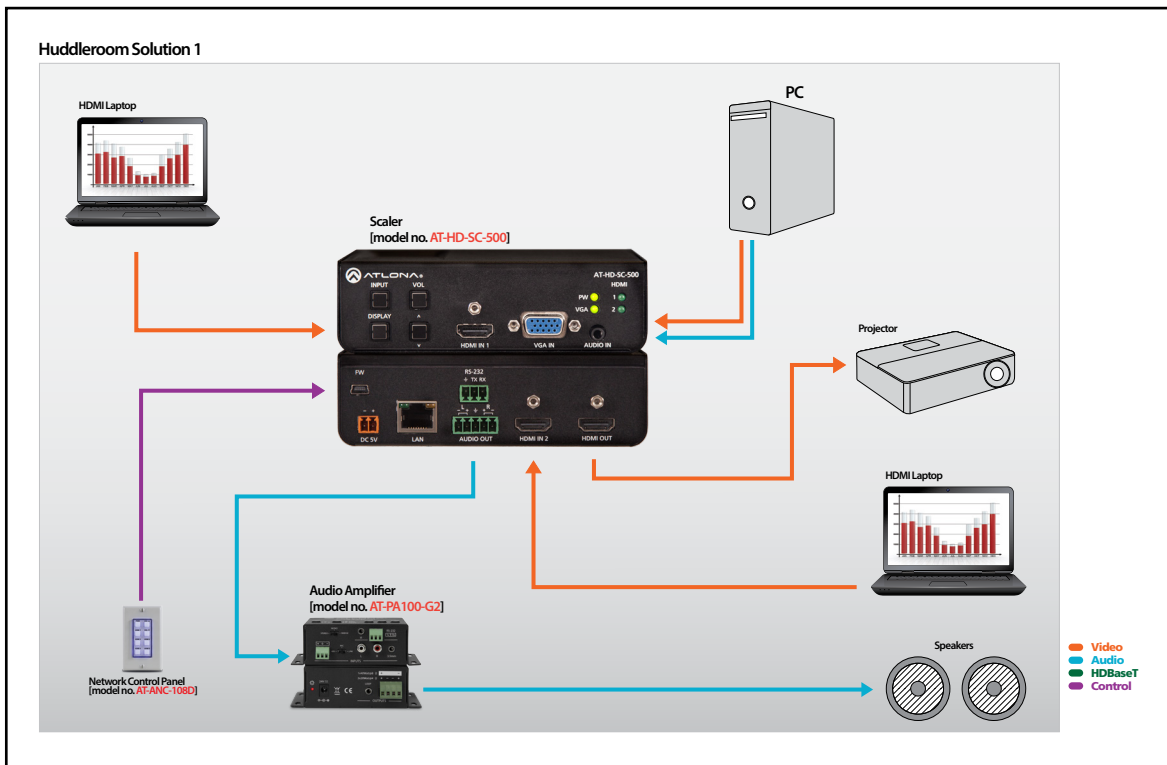
Small meeting areas where 2-3 employees can meet, collaborate, and share ideas are necessary because interaction at a cubicle eliminates confidentiality and interrupts nearby workers. But with small spaces, come small budgets. Low-cost flat panels, simple inputs for a laptop or iPad, and PC- based teleconferencing are the components of these basic systems.

Solution

From transmitter / receiver combos to small switchers, Atлона has multiple solutions that enable cost-effective huddle rooms. Integrated control, audio de-embedding and switching make the design simple and repeatable. Advanced Automatic Display Control features make it simple for anyone to use these rooms. With switching, scaling, HDBaseT™ extension for inputs and outputs, and audio de-embedding in a small box you can be certain Atлона technology supports collaboration!



Application Diagram and Specifications



Model	Description	Inputs	Outputs	Benefits
AT-HD-SC-500	Three-Input Scaler for HDMI and VGA Signals	2 - HDMI 1 - VGA with analog audio 1 - LAN	1 - HDMI 1 - Balanced analog audio	Scaler with multiple inputs, automatic display control, and automatic input selection for use in a small system with HDMI and VGA sources along with audio features.
AT-PA100-G2	Audio Amplifier	1 - RCA L/R 1 - 3.5mm L/R 1 - Microphone	1 - Stereo Speaker 1 - 3.5mm loop	Small, energy efficient, stereo/mono amplifier. Provides 2x20 W, stereo/dual mono; 1x 40 W, bridged. Features two, stereo line level inputs and mic input with 48 volt phantom power, ducking and RS-232 control.

Teleconferencing Solution

Challenge

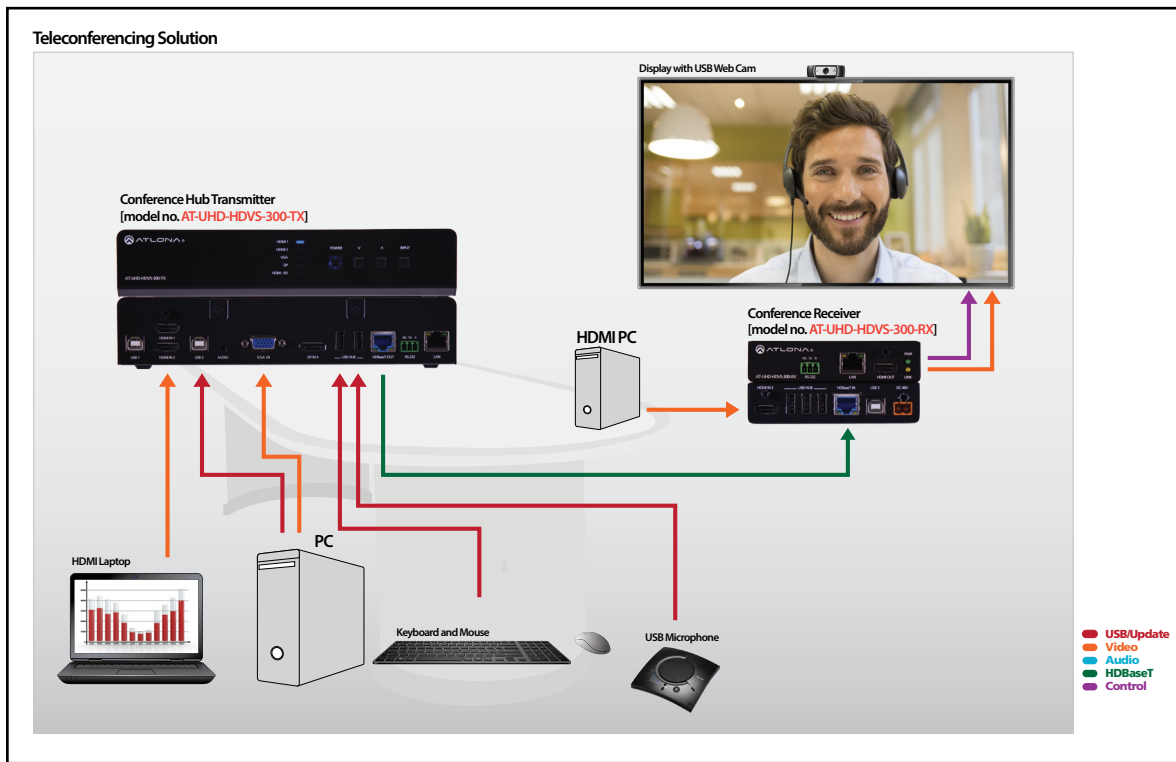
The team isn't always in one room. Soft codecs such as Skype, GoToMeeting and others have made the whole world flat. AV equipment to support switching and extension for both HDMI and USB has been complicated. Plus some conference systems have dedicated PCs at the table and others have dedicated PCs at the screen.

Solution

Atlona's HDVS-300 is a transmitter/receiver with switching for HDMI and USB. Put a USB webcam at the screen, a USB mic at the table. Design options include putting the user-brought conferencing PC at the table or a dedicated PC located at the screen or the table. Inputs are provided for users who bring HDMI, DP, or VGA PCs.



Application Diagram and Specifications



Works with
AMS

Model	Description	Inputs	Outputs	Benefits
AT-UHD-HDVS-300-KIT New	Soft Codec Conferencing System	3 - HDMI 1 - VGA 1 - Analog audio 1 - DisplayPort 5 - USB A	1 - HDMI 3 - USB B	Connect USB mics, webcams, HDMI and analog sources to a Laptop or PC for Skype®, WebEx® and GoToMeeting® web-based conferencing. All AV, data, control, USB, and Ethernet transmission between the transmitter/receiver pair is carried over a single, Ethernet-enabled HDBaseT™ link up to 328 feet (100 meters).

Meeting Room Solution

Challenge

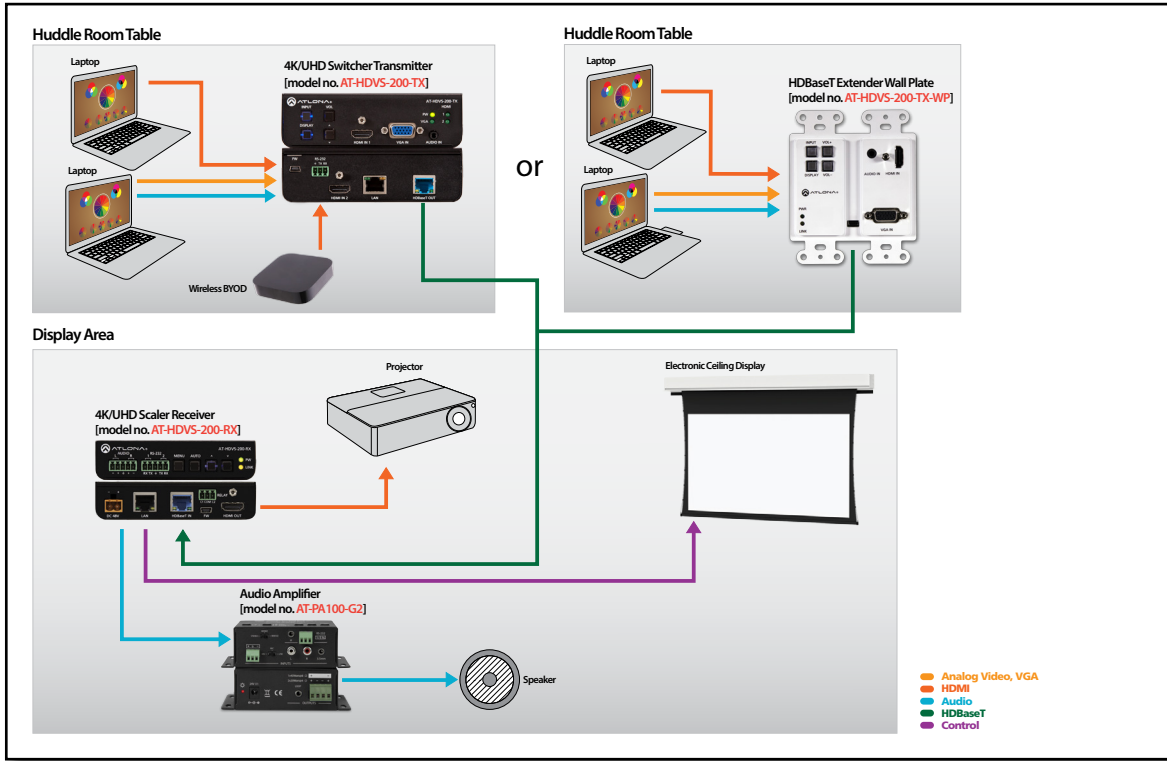
Creating a meeting space where teams can get together and discuss a project or where presentations can be given by vendors still requires sophisticated AV systems even though the environment isn't the top-floor boardroom. Meetings can be ad hoc, so there is little time for fiddling with AV gear and settings, plus tight budgets don't allow for a control system.

Solution

The AT-HDVS-200-TX auto-switching transmitter and scaling receiver is a complete system. It accommodates three input devices and mounts discreetly under the meeting table and provides volume control. The scaling receiver can be placed behind the display or at the projector. The HDVS 200 utilizes HDBaseT™ to extend AV signals, control, and Ethernet over a single category cable. At source plug-in, Atlona's Advanced Automatic System Control turns on the projector, drops the screen, and scales the signal – all without any user input.



Application Diagram and Specifications



Works with
AMS

Model	Description	Inputs	Outputs	Benefits
AT-HDVS-200-TX AT-HDVS-200-TX-WP New	4K/UHD 2 or 3 input Switcher Transmitter	1 or 2 - HDMI 1 - VGA/ 1 - 3.5mm L/R 1 - LAN	1 - HDBaseT	Input from PCs with VGA or HDMI output. PoE-powered from switcher at distances up to 328 feet (100 m). Auto-switch between inputs. Ethernet connections for control and management. CEC, IP and RS-232 display control. Wallplate only has 1 HDMI input.
AT-HDVS-200-RX New	Scaler Receiver	1 - HDBaseT 1 - RS-232	1 - HDMI 2 - RS-232 1 - LAN 1 - Contact Closure 1 - Balanced Audio	HDMI extension up to 328 ft. (100 m) @ 1080p. Built-in scaler to match source signal to the display's native resolution. LAN port extends Ethernet for control and management. CEC, IP and RS-232 display control. Uses PoE to eliminate local AC outlet at transmitter.
AT-PA100-G2	Audio Amplifier	1 - RCA L/R 1 - 3.5mm L/R 1 - Microphone	1 - Stereo Speaker 1 - 3.5mm loop	Small, energy efficient, stereo/mono amplifier. Provides 2x20 W, stereo/dual mono; 1x 40 W, bridged. Features two, stereo line level inputs and mic input with 48 volt phantom power, ducking and RS-232 control.

Executive Conference Space

Challenge

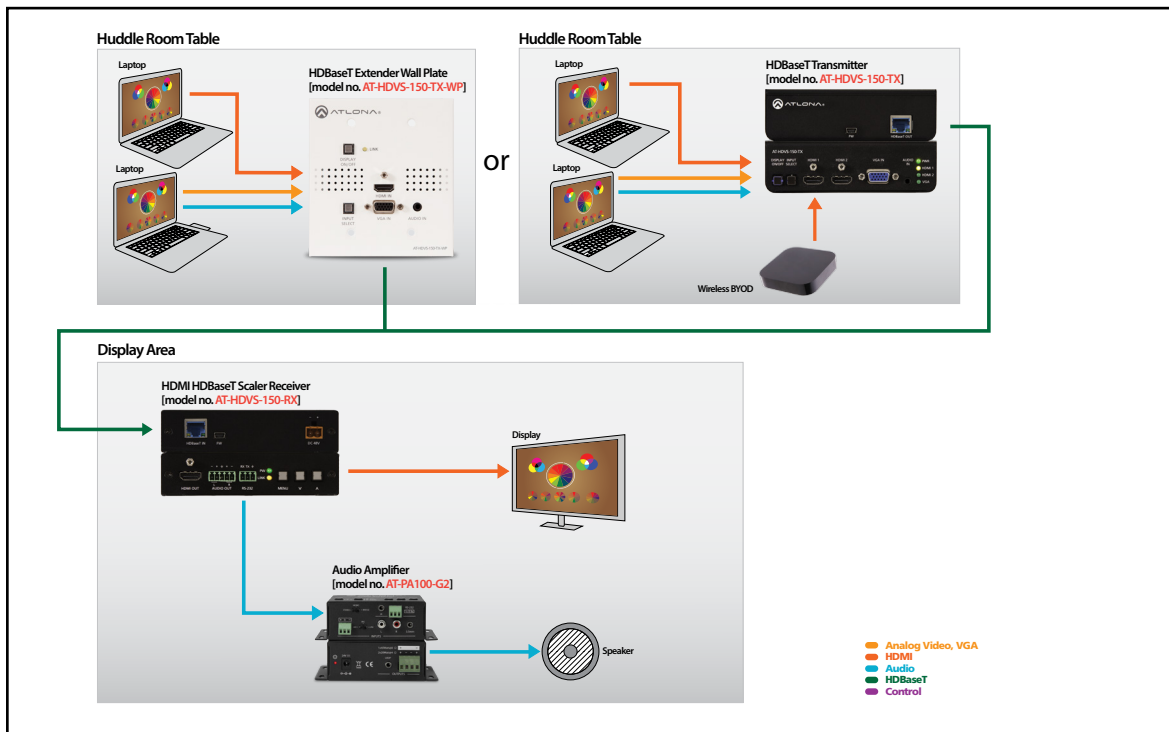
Contemporary executive suites often feature small conference areas set aside for strategy sessions and private meetings. Plans and presentations are discussed so detailed spreadsheets and high resolution renderings must be clear. Executives don't want to fumble with controls when connecting laptops or search for the remote control to power up display or adjust the volume.

Solution

Small systems in suites should offer the same performance as a larger meeting space. The HDVS-150 Series offers a two-input, wall mounted switcher with two inputs and a compact, three-input switcher with an additional HDMI input. Both offer auto switching and HDBaseT™ output extension for AV and control signals with 230 ft (70m) performance for transmission to the HDVS-150-RX scaler. The scaler remotely powers the switchers using PoE technology for ease of integration.



Application Diagram and Specifications



Model	Description	Inputs	Outputs	Benefits
AT-HDVS-150-TX-WP	Dual Input Wall plate	1 - HDMI 1 - VGA/3.5mm audio	1 - HDBaseT	Input from PCs with VGA or HDMI output. PoE power from AT-HDVS-150-RX at distances up to 230 feet (70 m). Switch between inputs with control via RS-232 or auto-switch.
AT-HDVS-150-TX	3 Input Switcher Extender	2 - HDMI 1 - VGA/3.5mm audio	1 - HDBaseT	Input from PCs with VGA or HDMI output. PoE power from AT-HDVS-150-RX at distances up to 230 feet (70 m). Switch between inputs with control via RS-232 or auto-switch.
AT-HDVS-150-RX New	HDBaseT Scaler/Receiver	1 - HDBaseT	1 - HDMI 1 - Analog Balanced Audio 1 - RS-232	Scaler with HDBaseT input. PoE power to AT-HDVS-150-TX-WP at distances up to 230 feet (70 m). Transmit control signals from AT-HDVS-150-TX via RS-232 to display. De-embeds balanced, analog audio.
AT-PA100-G2	Audio Amplifier	1 - RCA L/R 1 - 3.5mm L/R 1 - Microphone	1 - Stereo Speaker 1 - 3.5mm loop	Small, energy efficient, stereo/mono amplifier. Provides 2x20 W, stereo/dual mono; 1x 40 W, bridged. Features two, stereo line level inputs and mic input with 48 volt phantom power, ducking and RS-232 control.

Small Conference Room Solution

Challenge

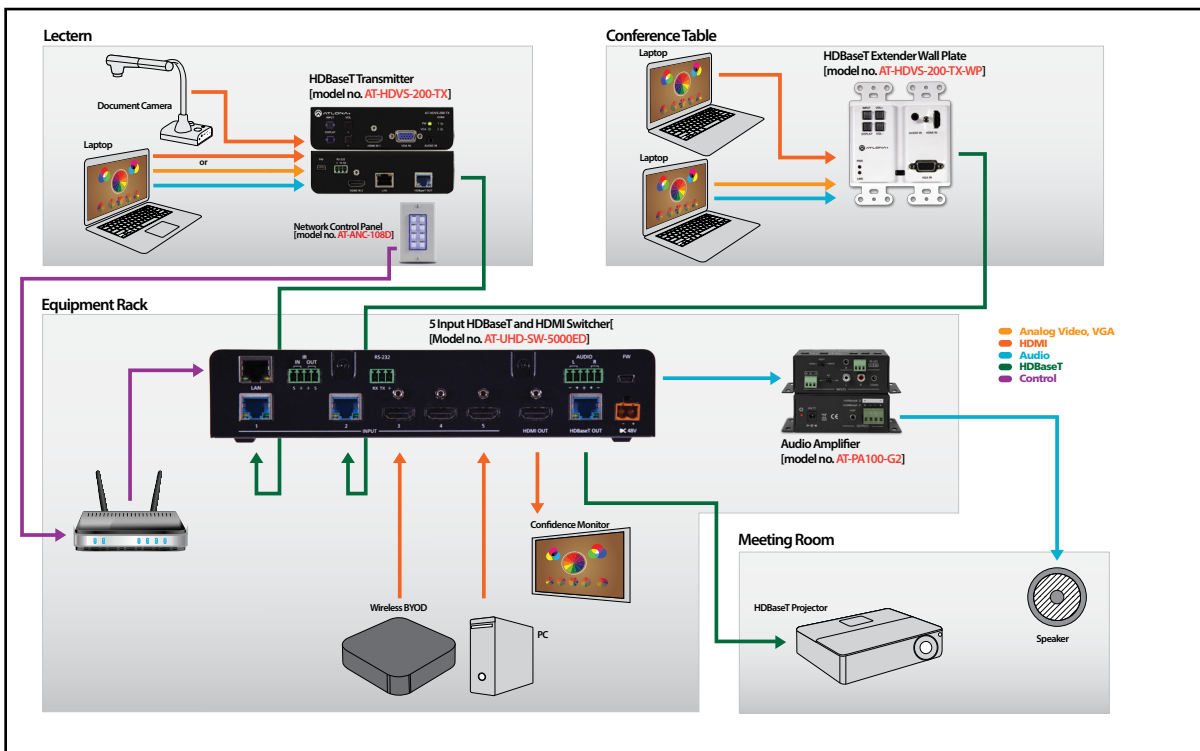
Many conference rooms have multiple locations from which presentations are made. Guest presenters may present from the lectern while support team members connect a laptop from the conference table. In addition, in-house stakeholders may present from a wireless device. Two or three of those locations need to be combined with one or two displays but without the expense of a large switcher or complex control.

Solution

Combine the power of the HDVS-200 Series transmitters and the AT-UHD-SW-5000ED and you have a very simple, automatically controlled AV system. Advanced Automatic System Control offers Automatic Display Control and Automatic Input Selection to simplify system operation. For manual control simply add the AT-ANC-108D network control panel. Setup is a breeze with the AMS management system.



Application Diagram and Specifications



Works with
AMS

Model	Description	Inputs	Outputs	Benefits
AT-UHD-SW-5000ED New	4K/UHD 5 Input HDMI and HDBaseT Switcher	2 - HDBaseT 3 - HDMI 1 - RS-232 1 - IR	1 - HDBaseT 1 - HDMI 1 - Audio L/R 1 - RS-232 1 - IR	5x1 switcher with Ethernet-enabled HDBaseT inputs for remote sources. Features Advanced Automatic System Control. HDMI plus mirrored HDBaseT output to extend AV signals and Control up to up to 328 ft. (100 m).
AT-HDVS-200-TX AT-HDVS-200-TX-WP New	4K/UHD 2 or 3 input Switcher Transmitter	1 or 2 - HDMI 1 - VGA/ 1 - 3.5mm L/R 1 - LAN	1 - HDBaseT	Input from PCs with VGA or HDMI output. PoE-powered from switcher at distances up to 328 feet (100 m). Auto-switch between inputs. Ethernet connections for control and management. CEC, IP and RS-232 display control. Wallplate only has 1 HDMI input.
AT-UHD-EX-100CE-RX	100 Meter HDBaseT Receiver	1 - HDBaseT 1 - RS-232 1 - IR	1 - HDMI 1 - LAN 1 - RS-232 1 - IR	HDMI extension up to 328 ft. (100 m) @ 1080p and @ 4K/UHD. Delivers 4K/UHD video, audio, 100BaseT Ethernet, power and control.

Training Room Solution

Challenge

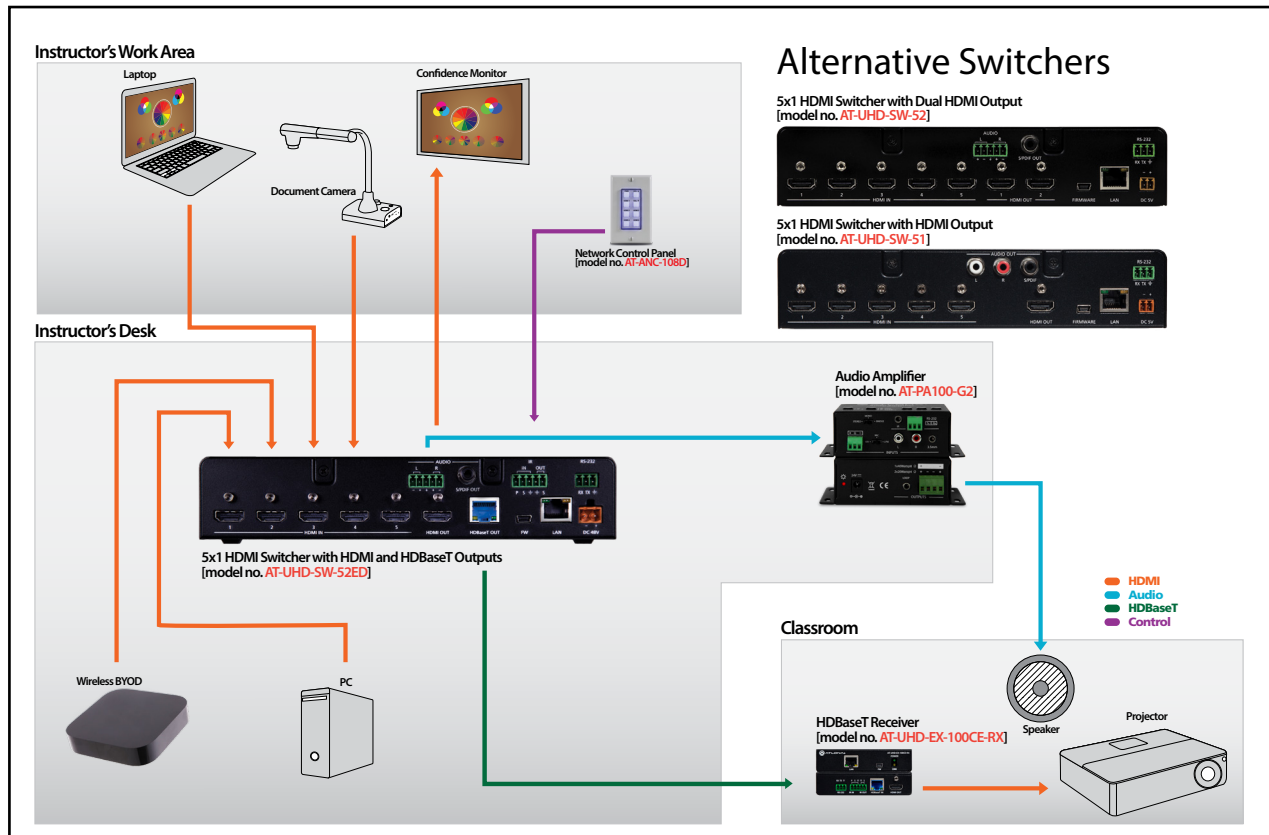
AV for corporate training facilities requires thoughtful integration to ensure signals are properly managed and that systems are easy to operate. Trainers create and deliver their content in a variety of methods from local laptop presentations and files served up from a corporate Intranet to tablets and physical product demonstrations.

Solution

The AT-UHD-SW-52ED provides five HDMI inputs with 4K/UHD capability to handle any source resolution. Auto-switching capability means the instructor is never impeded by input selection. HDMI and HDBaseT™ mirrored outputs enable confidence monitoring for the instructor while providing signal runs up to 328 feet (100 meters) for distant projectors. The switcher is compatible with any control system using IR, RS-232, and TCP/IP for ease of remote operation. With RS-232, IP and CEC Display control, your system can easily be automated, even with many consumer TVs!



Application Diagram and Specifications



Works with
AMS

Model	Description	Inputs	Outputs	Benefits
AT-UHD-SW-52ED	4K/UHD 5 Input HDMI Switcher with Mirrored outputs	5 - HDMI 1 - RS-232 1 - IR 1 - LAN	1 - HDBaseT 1 - HDMI 1 - Analog Balanced Audio 1 - S/PDIF	Five-input HDMI switcher with mirrored HDBaseT and HDMI outputs. Features 4K/UHD capability, automatic input selection, PoE for receivers, audio de-embedding, plus ARC to digital audio outputs. Mirrored HDBaseT output offers extension up to 328 ft. (100 m) @ 1080p and @ 4K/UHD.
AT-UHD-EX-100CE-RX	100 Meter HDBaseT Receiver	1 - HDBaseT 1 - RS-232 1 - IR	1 - HDMI 1 - LAN 1 - RS-232 1 - IR	HDMI extension up to 328 ft. (100 m) @ 1080p and @ 4K/UHD. Delivers 4K/UHD video, audio, 100BaseT Ethernet, power and control through a single cable. Uses PoE to eliminate local AC outlet.
AT-PA100-G2	Audio Amplifier	1 - RCA L/R 1 - 3.5mm L/R 1 - Microphone	1 - Stereo Speaker 1 - 3.5mm loop	Small, energy efficient, stereo/mono amplifier. Provides 2x20 W, stereo/dual mono; 1x 40 W, bridged. Features two, stereo line level inputs and mic input with 48 volt phantom power, ducking and RS-232 control.

Divisible Room Solution

Challenge

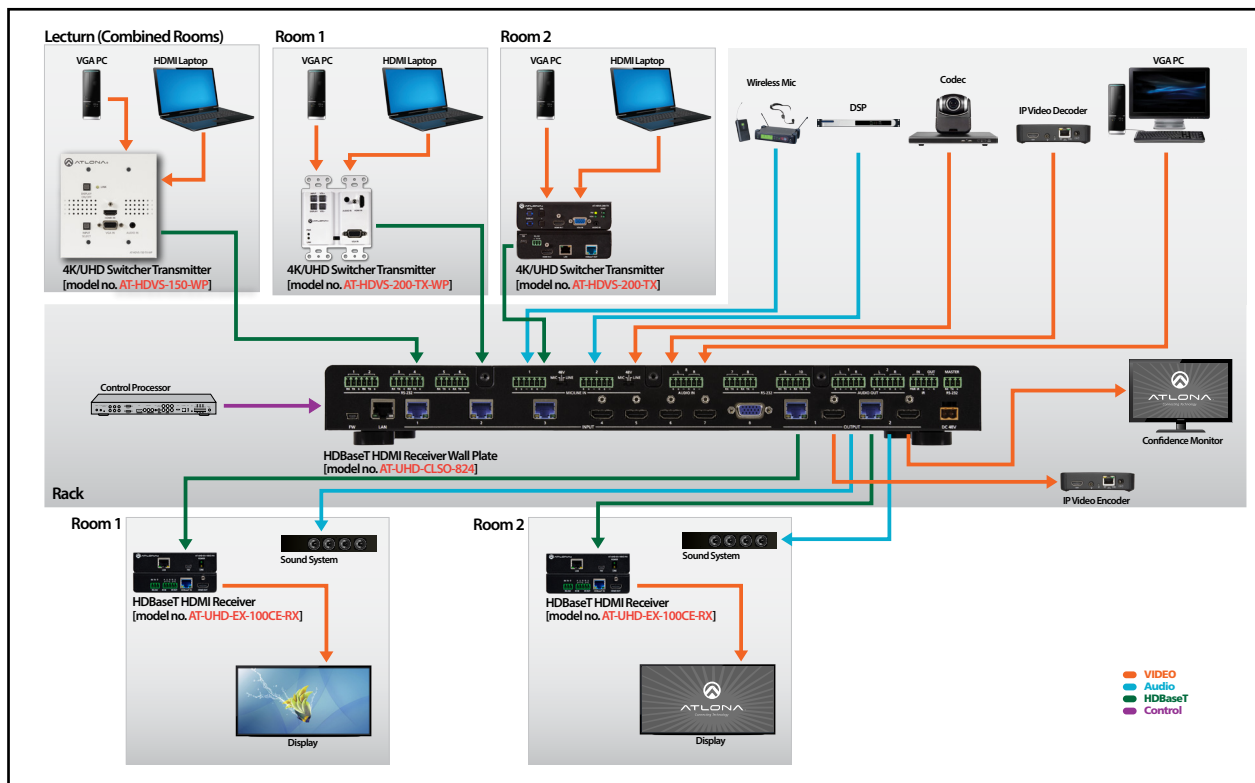
Space is always at a premium and needs to be flexible for different types and sizes of meetings. Multiple screens help communicate more effectively. Teleconference systems need to switch multiple sources to both local and distant screens. AV solutions are often required to support multiple screens simultaneously.

Solution

The AT-UHD-CLSO-824 8x2 matrix switcher is designed to support up to four displays with two separate content streams. HDBaseT™ inputs simplify sending content from lecterns and conference tables. The audio matrix mixer breaks away audio from either video output for mixing with analog sources such as mics or external DSPs. Ethernet-enabled HDBaseT endpoints simplify control system integration.



Application Diagram and Specifications



Works with
AMS

Model	Description	Inputs	Outputs	Benefits
AT-UHD-CLSO-824	4K/UHD 8x2 Matrix Switcher with PoE	3 – HDBaseT 4 – HDMI 1 – Analog audio/video	2 – HDBaseT 2 – HDMI (mirrored)	Eight-input matrix switcher with dual, mirrored HDBaseT and HDMI outputs. Provides four HDMI inputs, one multi-function analog input, two mic inputs with 48V and ducking, plus Ethernet and PoE for 328 feet (100m) HDBaseT receivers. Supports any source up to 4K/UHD resolution.
AT-HDVS-150-TX-WP	Dual Input Wall Plate	1 - HDMI 1 - VGA/ 1 - 3.5mm L/R	1 - HDBaseT	Input from PCs with VGA or HDMI output. PoE powered from switcher at distances up to 230 feet (70 m). Auto-switch between inputs.
AT-HDVS-200-TX AT-HDVS-200-TX-WP	4K/UHD 2 or 3 Input Switcher Transmitter	1 or 2 - HDMI 1 - VGA/ 1 - 3.5mm L/R 1 - LAN	1 - HDBaseT	Input from PCs with VGA or HDMI output. PoE powered from switcher at distances up to 328 feet (100 m). Auto-switch between inputs. Ethernet control. Wallplate only has 1 HDMI input.
AT-UHD-100CE-RX	4K/UHD HDMI Over 100 Meter HDBaseT with Ethernet, Control and PoE	1 - HDBaseT 1 - RS-232 1 - IR	1 - HDMI 1 - LAN 1 - RS-232 1 - IR	HDMI extension up to 328 ft. (100 m) @ 1080p and @ 4K/UHD. Delivers 4K/UHD video, audio, 100BaseT Ethernet, power and control through a single cable. Uses PoE to eliminate local AC outlet.

Conference Room Solution

Challenge

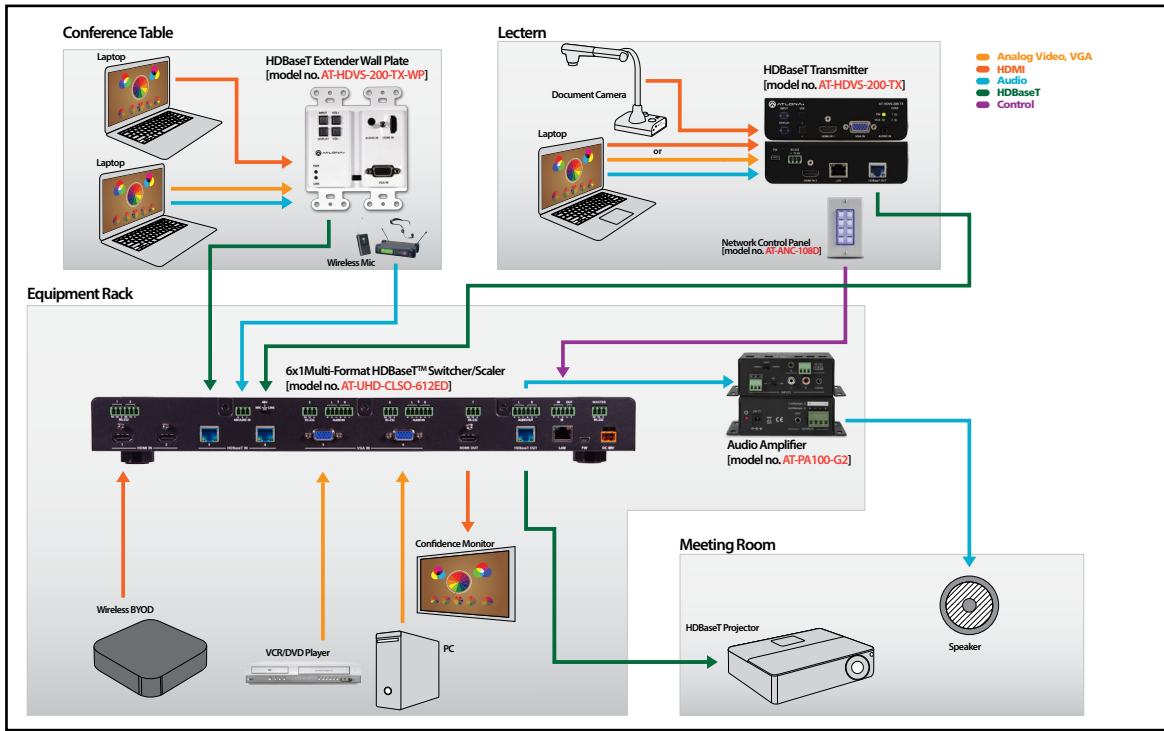
Conference rooms are designed to cater to a wide variety of presenters and media. Technology needs to operate simply and smoothly so the AV doesn't overshadow sales presentations, new ideas, and collaboration that define business meetings. Presentation material can be shared from laptops, wireless devices, company servers, document cameras and legacy portable media so the centerpiece of the system must be extremely flexible.

Solution

The Atлона AT-UHD-CLSO-612 4K/UHD multi-format switcher caters to multiple media types in multiple locations. Working in tandem with the HDVS-200 Series wall plate and compact switcher, as many as five HDMI and four analog sources can be managed by one switcher. Ethernet-enabled HDBaseT™ technology is used to transport signals between distant sources and display.



Application Diagram and Specifications



Works with
AMS

Model	Description	Inputs	Outputs	Benefits
AT-UHD-CLSO-612ED New	4K/UHD 6 Input Multi-Format Switcher	2 - HDMI 2 - HDBaseT 2 - Analog audio/video 1 - Microphone (ducking)	1 - HDBaseT 1 - HDMI (mirrored) 1 - Analog audio/video 1 - Analog Balanced Audio	Six-input switcher with mirrored HDBaseT and HDMI outputs. Provides two HDMI, two HDBaseT, two multi-function analog inputs and a mic input with 48V and ducking. Scales any source up to 4K/UHD resolution and downscales 4K content to 1080p or lower. 328 ft. (100 m) HDBaseT output with PoE.
AT-HDVS-200-TX AT-HDVS-200-TX-WP New	4K/UHD 2 or 3 input Switcher Transmitter	1 or 2 - HDMI 1 - VGA/ 1 - 3.5mm L/R 1 - LAN	1 - HDBaseT	Input from PCs with VGA or HDMI output. PoE-powered from switcher at distances up to 328 feet (100 m). Auto-switch between inputs. Ethernet connections for control and management. CEC, IP and RS-232 display control. Wallplate only has 1 HDMI input.
AT-UHD-EX-100CE-RX	100 Meter HDBaseT Receiver	1 - HDBaseT 1 - RS-232 1 - IR	1 - HDMI 1 - LAN 1 - RS-232 1 - IR	HDMI extension up to 328 ft. (100 m) @ 1080p and @ 4K/UHD. Delivers 4K/UHD video, audio, 100BaseT Ethernet, power and control through a single cable. Uses PoE to eliminate local AC outlet.

Classroom Solution

Challenge

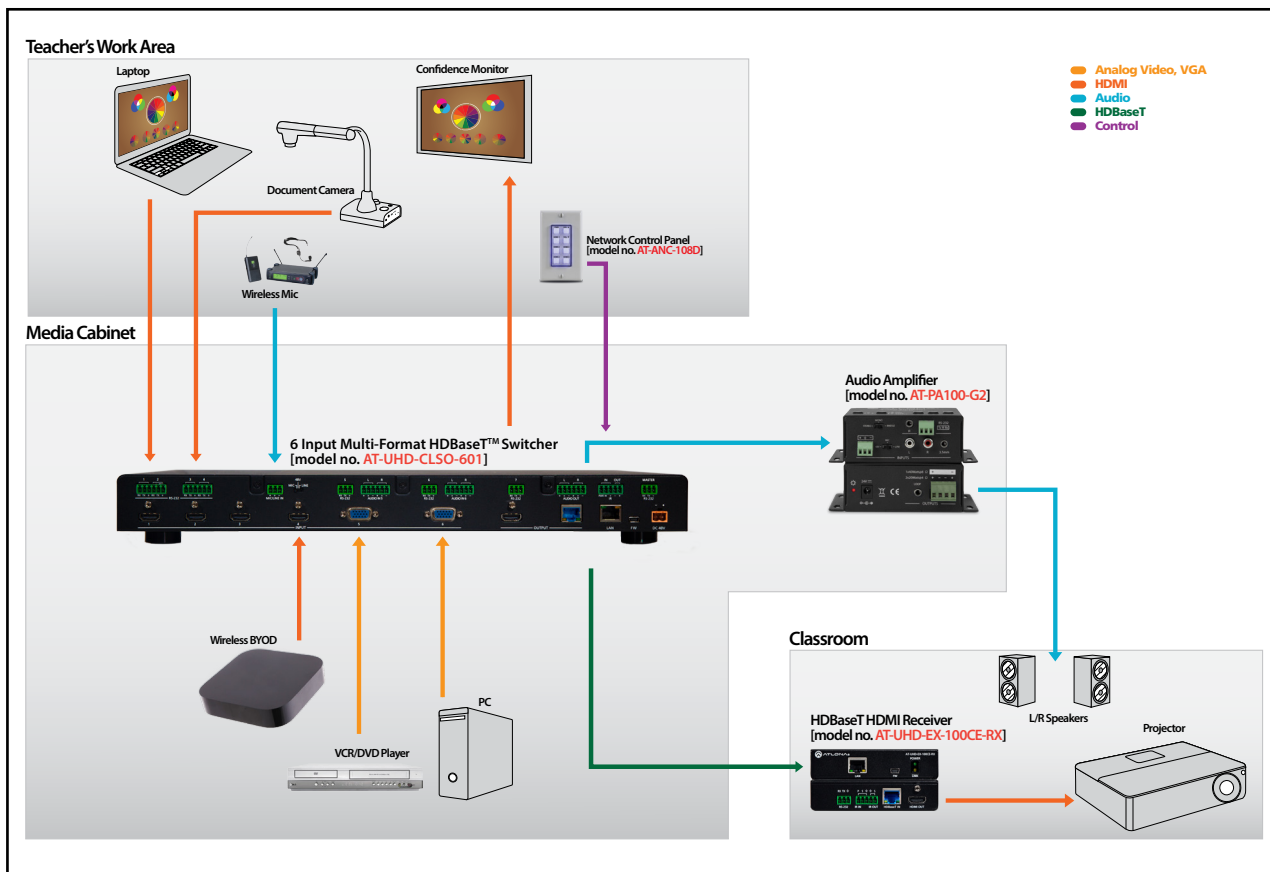
Classrooms challenge integrators like no other space – a rich variety of sources and needs that squeeze budgets. VCRs, VGA PCs, HDMI PCs, Blu-rays, document cameras, iPads and interactive boards all need to be integrated at a price low enough to be replicated tens, hundreds, or even thousands of times.

Solution

Atlona enables powerful, and efficient classroom systems. We design advanced technologies into easy-to-integrate devices while allowing integrators to choose control systems that match the needs of the classroom. Our switching, scaling, HDBaseT™ extension, audio amplification and more support enhanced learning environments where student instruction and learning comes first.



Application Diagram and Specifications



Works with
AMS

Model	Description	Inputs	Outputs	Benefits
AT-UHD-CLSO-601	4K/UHD Multi-Format Switcher with PoE	4 - HDMI 2 - Analog audio/video 1 - Microphone (ducking)	1 - HDBaseT 1 - HDMI (mirrored) 1 - Analog Balanced Audio	Six-input switcher with mirrored HDBaseT and HDMI outputs. Provides four HDMI, two multi-function analog inputs, and a mic input with 48V and ducking, plus Ethernet and PoE for 328 feet (100m) HDBaseT receivers. Scales any source up to 4K/UHD resolutions and downscales 4K content to 1080p or lower. Features Advanced Automatic System Control.
AT-UHD-EX-100CE-RX	100 Meter HDBaseT Receiver	1 - HDBaseT 1 - RS-232 1 - IR	1 - HDMI 1 - LAN 1 - RS-232 1 - IR	HDMI extension up to 328 ft. (100 m) @ 1080p and @ 4K/UHD. Delivers 4K/UHD video, audio, 100BaseT Ethernet, power and control through a single cable. Uses PoE to eliminate local AC outlet.
AT-PA100-G2	Audio Amplifier	1 - RCA L/R 1 - 3.5mm L/R 1 - Microphone	1 - Stereo Speaker 1 - 3.5mm loop	Small, energy efficient, stereo/mono amplifier. Provides 2x20 W, stereo/dual mono; 1x 40 W, bridged. Features two, stereo line level inputs and mic input with 48 volt phantom power, ducking and RS-232 control.

Media Space Solution

Challenge

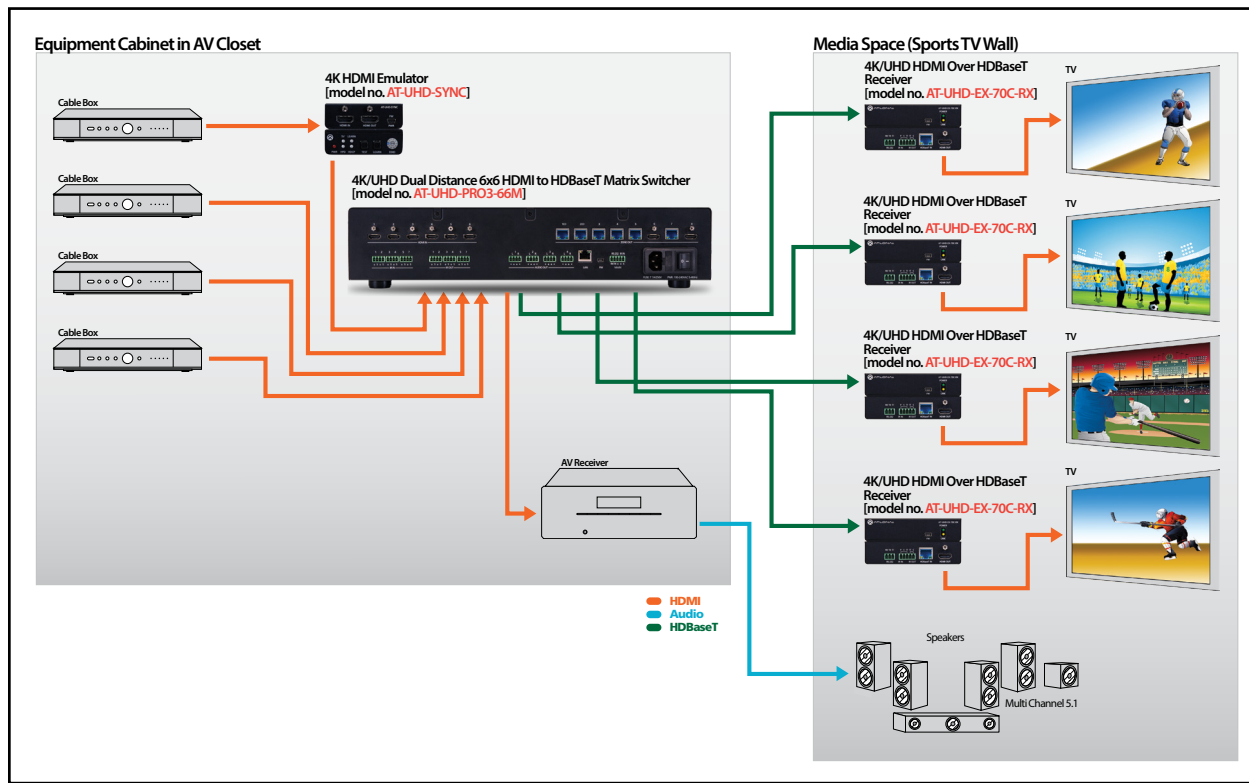
Sports, Sports, Sports and more Sports! The family in this home wants multiple TVs in this entertainment space so they can enjoy different content on each screen. The goal is to enjoy the AV without it detracting from the interior design or encumbering the space with cabinets, cables or other visible support equipment.

Solution

An Atлона HDMI or HDBaseT™ matrix switcher allows everyone to share in the fun and bring people together. Any game can be assigned to any TV whether it is satellite, cable or even streaming video. In cases where older HDMI cable boxes are utilized, it may be necessary to add the AT-UHD-SYNC, as shown, to resolve clock-stretching issues. All the equipment, including set top boxes, switcher, audio and the control system, are hidden in a remote AV closet. The aesthetics of the room satisfy everyone!



Application Diagram and Specifications



Works with
AMS

This solution contains products with 4K/UHD and HDCP 2.2 capability

Model	Description	Inputs	Outputs	Benefits
AT-UHD-PRO3-66M	HDMI to HDBaseT 6 x 6 Matrix Switcher	6 - HDMI 1 - RS-232 5 - IR 1 - LAN	2 - HDMI 1 - RS-232 4 - IR 6 - HDBaseT	Route any HDMI input to any or all HDBaseT outputs. Two HDMI outputs add output flexibility. 4K/UHD capability with HDCP 2.2. Stereo, line level audio breakout with volume, mute, and 5-band EQ. PoE for remote-powered receivers. Compatibility with all third-party control systems.
AT-UHD-EX-70C-RX	4K/UHD HDMI Over 70 Meter HDBaseT with Control and PoE	1 - HDBaseT 1 - RS-232 1 - IR	1 - HDMI 1 - RS-232 1 - IR	HDMI extension up to 230 ft. (70 m) @ 1080p and 130 ft. (40 m) @ 4K/UHD. Bidirectional extension of RS-232 and IR commands for control system flexibility. Uses PoE to eliminate local AC outlet.
AT-UHD-SYNC	4K HDMI Emulator	1-HDMI	1 - HDMI	Analyzes errors, identifies issues and restores failed HDMI signals. Provides a preset or learned EDID to an HDMI source. Indicates 5V, Hot Plug Detect, and HDCP signals.

Whole Home Solution

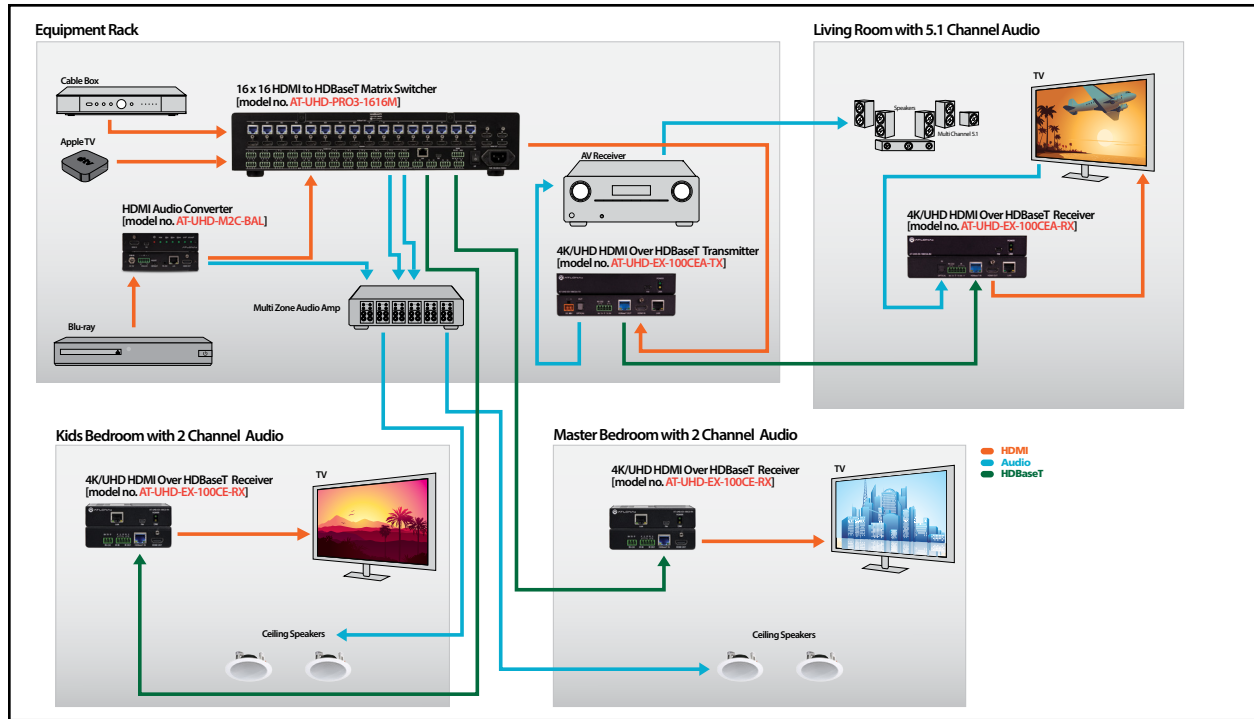
Challenge

Homes today have flat panel TV's in virtually every room. With all these TVs come unsightly black boxes, cables, and other equipment. Interior decorators absolutely hate it. Redundant Set Top Boxes and other sources for every room in the home is unattractive, costly, maintenance intensive, and reduces available living space. Remote controls usually come with these devices and are different for every room, that only confuses the homeowner.

Solution

Atlona's matrix switchers allow any source to be routed to any television in the home. All equipment is centrally located and becomes a shared resource where it is out of sight which maintains the elegance of the home. System service is easier since all hardware is centrally located. They are available in several different sizes and with HDMI or HDBaseT™ outputs to support TVs up to 328 feet (100m) from the switch.

Application Diagram and Specifications



Works with
AMS

4x4, 6x6 and 8x8
versions also available:
AT-UHD-PRO3-44M
AT-UHD-PRO3-66M
AT-UHD-PRO3-88M

This solution contains
products with 4K/UHD and
HDCP 2.2 capability

Model	Description	Inputs	Outputs	Benefits
AT-UHD-PRO3-1616M	4K/UHD 16x16 HDMI to HDBaseT Matrix Switcher with PoE	16 - HDMI 1 - RS-232 16 - IR 1 - LAN	4 - HDMI 1 - RS-232 16 - IR 16 - HDBASET	Route any HDMI input to any or all HDBaseT outputs. Four HDMI outputs add output flexibility. 4K/UHD capability with HDCP 2.2. Stereo, line level audio breakout with volume, mute, and 5-band EQ. PoE for remote-powered receivers. Compatibility with all third-party control systems.
New AT-UHD-EX-100CEA-KIT	4K/UHD HDMI Over 100 Meter HDBaseT TX/RX Kit with Optical Audio	1 - HDBaseT 1 - Optical Audio 1 - RS-232 1 - IR	1 - HDMI 1 - Optical Audio 1 - LAN 1 - RS-232 1 - IR	HDMI extension up to 328 ft. (100 m) @ 1080p and @ 4K/UHD. Delivers 4K/UHD video, audio, power and control through a single cable. Uses PoE to eliminate local AC outlet. Receiver to transmitter digital audio pathway routes multi-channel audio from smart TV to AVR when TV is used for embedded apps or local gaming consoles.
AT-UHD-M2C-BAL	HDMI Multi-Channel to Two-Channel Audio Converter	1 - HDMI	1 - HDMI 1 - L/R Captive Screw	Enables simultaneous support of multi-channel and two channel audio. Comprehensive audio signal format conversion and compatibility. Accepts all Dolby and DTS codecs up to Dolby TrueHD, Dolby Atmos and DTS-HD Master Audio from Blu-ray disc players.
AT-UHD-EX-70C-RX	4K/UHD HDMI Over 70 Meter HDBaseT with Control and PoE	1 - HDBaseT 1 - RS-232 1 - IR	1 - HDMI 1 - RS-232 1 - IR	HDMI extension up to 230 ft. (70 m) @ 1080p and 130 ft. (40 m) @ 4K/UHD. Bidirectional extension of RS-232 and IR commands for control system flexibility. Uses PoE to eliminate local AC outlet.
AT-UHD-EX-100CE-RX	4K/UHD HDMI Over 100 Meter HDBaseT with Control and PoE	1 - HDBaseT 1 - RS-232 1 - IR	1 - HDMI 1 - RS-232 1 - IR	HDMI extension up to 328 ft. (100 m) @ 1080p and @ 4K/UHD. Delivers 4K/UHD video, audio, power and control through a single cable. Uses PoE to eliminate local AC outlet.

Retail Application Solution

Challenge

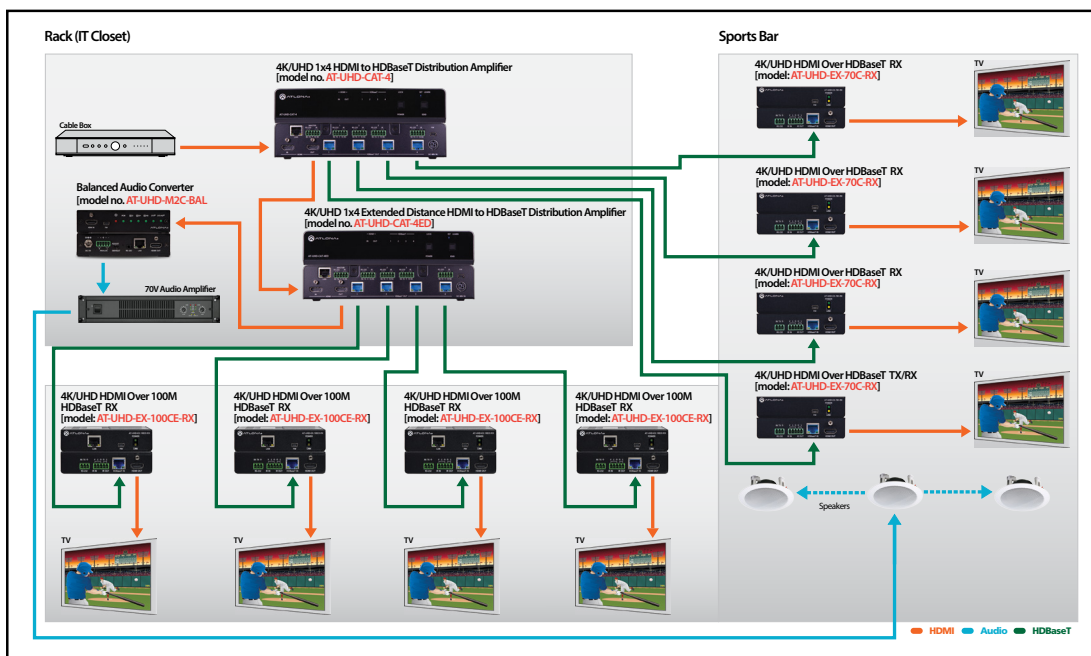
Sports Bars and TV showrooms demand the highest quality signal be delivered to each 4K television to entice customers to make an immediate purchase decisions. Retail stores need their in-store messages to reach shoppers without the barriers of poor signal quality. These environments call for clear, crisp, ultra-high definition images, free from soft images and sparkles that poor image distribution systems can cause. A system must not only provide scalability but signal integrity over long distances as well.

Solution

Atlona's UHD-CAT Series meet the challenges of these demanding venues with the value of built-in HDBaseT™ transmission. The series offers both 1 x 8 and 1 x 4 HDMI to HDBaseT distribution with 70 meter (230 foot) performance plus a 1 x 4 version with extended-distance 100 meter (328 foot) performance. Features include 4K/UHD @ 60 Hz capability with 4:2:0 color depth, EDID management, and HDCP 2.2 compliance. To simplify installation, signal distribution includes PoE receiver powering, display control using IR, RS-232, CEC or IP.



Application Diagram and Specifications



Works with
AMS

- Also available in a 1x8 version: **AT-UHD-CAT-8**
- This solution contains products with 4K/UHD and HDCP 2.2 capability
- Please confirm CEC compatibility for selected televisions

Model	Description	Inputs	Outputs	Benefits
New AT-UHD-CAT-4	4K/UHD 1x4 HDMI to HDBaseT Distribution Amplifier	1 - HDMI 5 - RS-232 5 - IR 1 - LAN	1 - HDMI 4 - HDBaseT 5 - RS-232 5 - IR	HDMI distribution and extension up to 230 ft. (70 m) @ 1080p and 130 ft. (40 m) @ 4K/UHD. Delivers 4K/UHD video, audio, power and control (IR, RS-232, CEC) through a single cable. Separate control I/O for each output. Uses PoE to eliminate local AC outlet for receivers. HDMI pass-through for daisy-chaining.
New AT-UHD-CAT-4ED	4K/UHD 1x4 Extended Distance HDMI to HDBaseT Distribution Amplifier	1 - HDMI 5 - RS-232 5 - IR 1 - LAN	1 - HDMI 4 - HDBaseT 5 - RS-232 5 - IR	HDMI distribution and extension up to 328 ft. (100 m) @ 4K/UHD. Delivers video, audio, power and control (IR, RS-232, CEC or IP) through a single cable. Separate control I/O for each output. Uses PoE to eliminate local AC outlet for receivers. HDMI pass-through for daisy-chaining.
AT-UHD-EX-100CE-RX	4K/UHD HDMI Over 100 Meter HDBaseT RX with Ethernet, Control and PoE	1 - HDMI 1 - HDBaseT 1 - LAN 1 - RS-232 1 - IR	1 - HDMI 1 - HDBaseT 1 - LAN 1 - RS-232 1 - IR	HDMI extension up to 328 ft. (100 m) @ 1080p and @ 4K/UHD. Delivers 4K/UHD 60Hz video, audio, 100BaseT Ethernet, power, and control through a single cable. Uses PoE to eliminate local AC outlet at receiver.
AT-UHD-EX-70C-RX	4K/UHD HDMI Over 70 Meter HDBaseT TX/ RX Kit with Control and PoE	1 - HDMI 1 - HDBaseT 1 - RS-232 1 - IR	1 - HDMI 1 - HDBaseT 1 - RS-232 1 - IR	HDMI extension up to 230 ft. (70 m) @ 1080p and 130 ft. (40 m) @ 4K/UHD. Delivers 4K/UHD 60Hz video, audio, power, and control through a single cable. Uses PoE to eliminate local AC outlet at receiver.
AT-UHD-M2C-BAL	HDMI Multi-Channel to Two-Channel Balanced Audio Converter	1 - HDMI 1 - LAN 1 - RS-232	1 - HDMI 1 - Balanced L/R	Extracts and downmixes LPCM, multi-channel Dolby and DTS surround sound signals from HDMI sources to balanced analog signals. Compatible with 4K/UHD signals. Provides controls for 2-ch./1-ch. mode, volume, mute, bass, and treble via RS-232, TCP/IP and a web-based GUI.

Atlona Management System



Atlona Management System

Network management and configuration of Atlona IP-controllable products

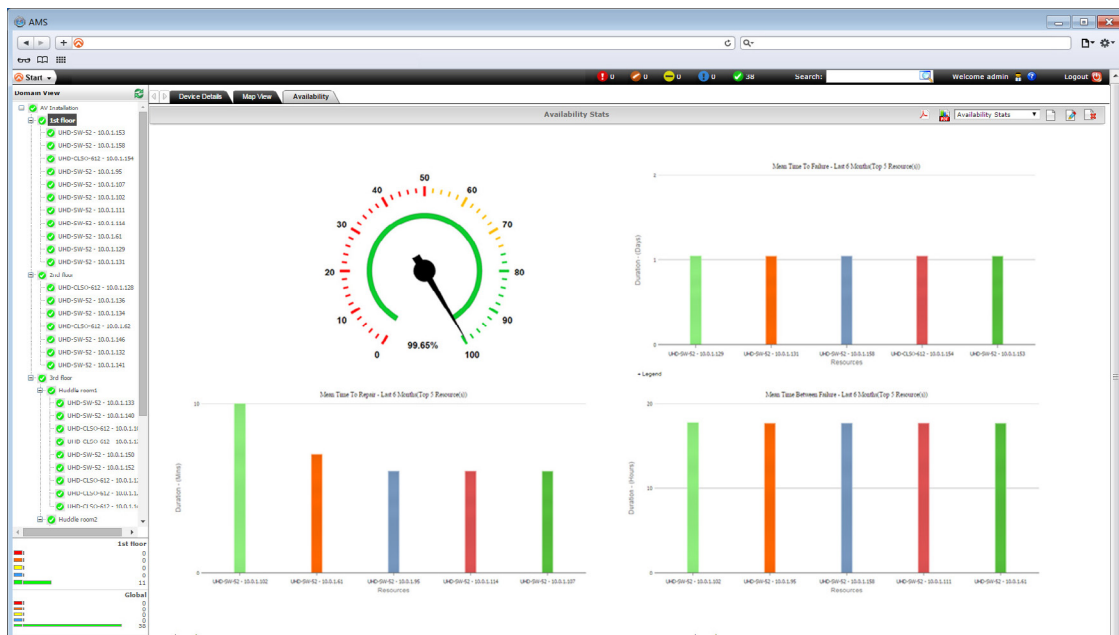
The Atlona Management System (AMS) is a powerful software resource for select Atlona IP-controllable products in commercial, educational, government and residential environments. It integrates product configuration, management, and updates to reduce installation time and enable remote support. Comprehensive features include: automatic search and detection of Atlona products; device configuration in single or multiple sites; configuration backup, automatic or user-triggered firmware upgrades, and an intuitive graphical user interface.

The AMS is based on a distributed architecture where multiple installed AV devices can be managed from a single server. Using the simple, web browser-based user interface, the operator can drill-down from a high-level network view to an individual device. The operator can choose to manage systems either locally (LAN) or from a remote location (WAN).

Scalable Remote Management

AMS is ideal for use in multi-device AV installations. It is scalable to any size installation. Remote management capabilities of the AMS enable AV technicians to manage, operate and maintain AV systems from anywhere and anytime using a common web browser – requires access to the network on which the server is installed. AMS will auto-detect installed Atlona devices, retrieve and backup current configurations, copy the configuration of one Atlona device to other, similar devices, and perform firmware upgrades without a technician actually touching the Atlona device. The AMS allows the technician to configure Atlona devices offline and push configurations once the devices are online.

Look for the “Works with AMS” icon in this catalog to see which IP-controllable Atlona products feature this technology. For more information on the Atlona Management System, see <http://atlona.com/product/at-sw-ams>.



The Atlona Management System offers an intuitive user interface and many integrator-friendly features including the ability to auto-detect installed Atlona devices, retrieve and back-up current configurations, copy configuration of one Atlona device to another, and perform firmware upgrades without a technician being on-site. AMS also offers device health monitoring with data presented in a dashboard-style presentation.